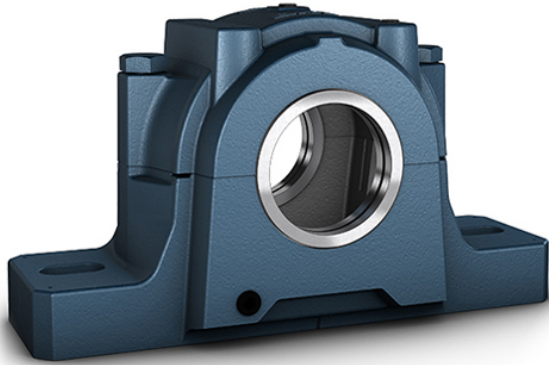




# Browning BEARING LLC

## SKF SAF522H/H7VZ686 Pillow Block Housings



Bearing No. SAF522H/H7VZ686

base to bore centerline:	4.9375 in
housing material:	Cast Iron
overall length:	16.5000 in
compatible bearing type:	Spherical Roller
overall height:	9.4219 in
D	12.6250 to 14.5000 in
B	6.5000 in
series:	SAF
mounting:	Two-Bolt Base
manufacturer upc number:	7316571740102
housing construction:	Split Pillow Block
Weight	73 lbs
compatible bore diameter:	4.0000 in, 3.8750 in, 3.9375 in, 3.8125 in

SAF522H/H7VZ686 Bearing 2D drawings and 3D CAD models